

THE NEPTUNE

GLITZ



VOL - II, ISSUE - 14

SEPTEMBER - 2013

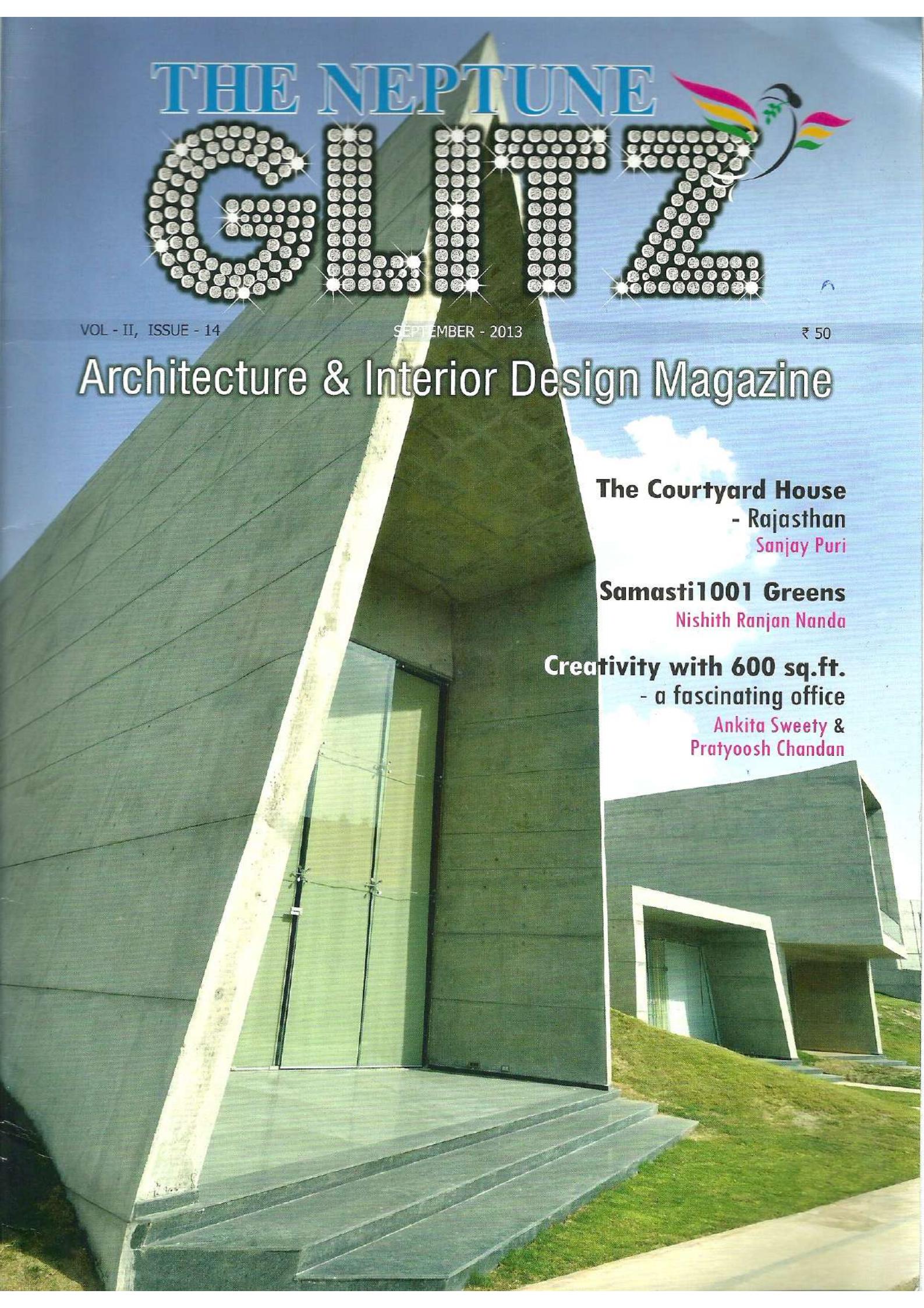
₹ 50

Architecture & Interior Design Magazine

The Courtyard House
- Rajasthan
Sanjay Puri

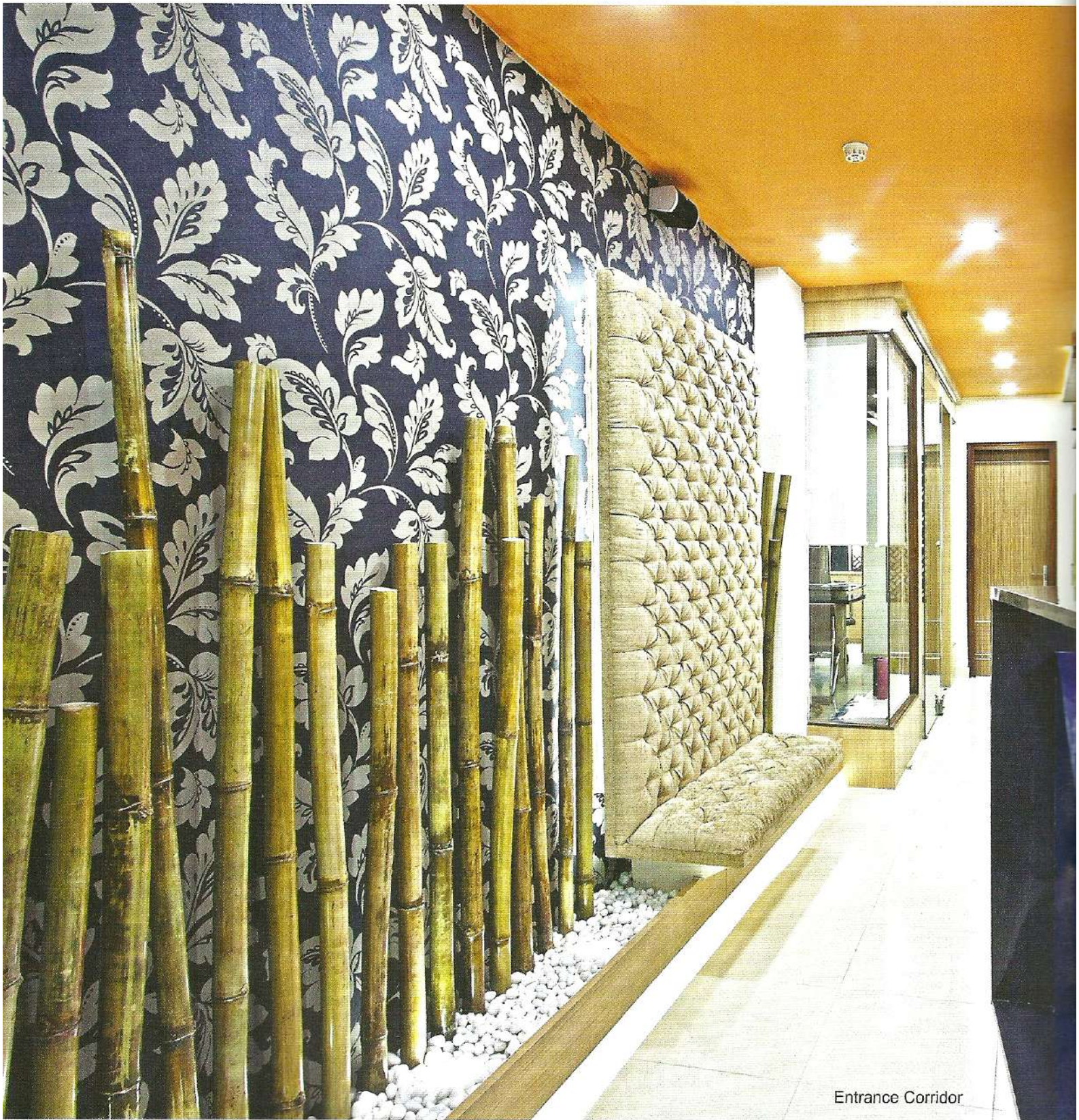
Samasti1001 Greens
Nishith Ranjan Nanda

Creativity with 600 sq.ft.
- a fascinating office
Ankita Sweety &
Pratyoosh Chandan



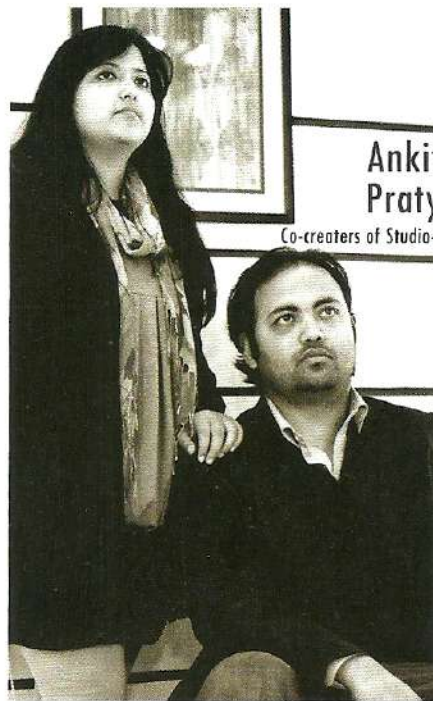
Creativity with 600 sq.ft.

- a fascinating office



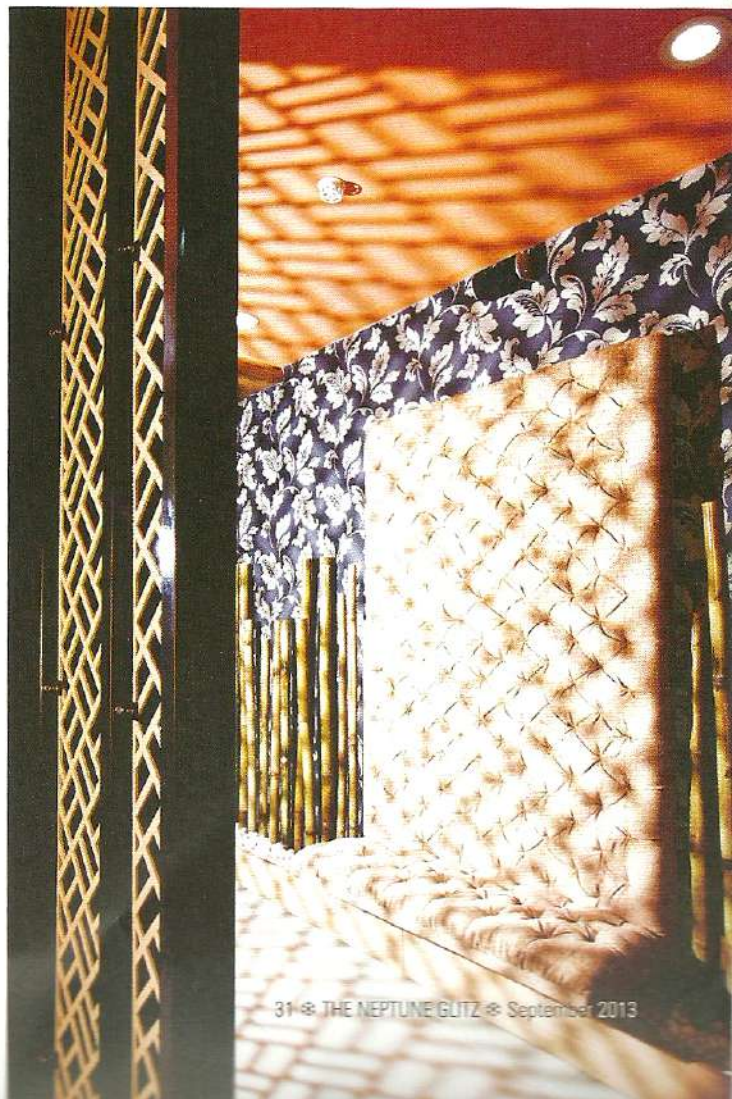
Entrance Corridor

Ankita Sweety & Pratyosh Chandan initiated "Studio-an-v-thot Architects Pvt. Ltd." - a design consultancy firm in Delhi in the year 2009. "An-V-Thot" is a hybrid of two words, (anvit) Sanskrit & (thought) English. "anvit" means followed by, so it is actually a studio followed by a thought, and as the name suggests both Ankita & Pratyosh are always eager to and strive to define their endeavors in a thought evolving and settling manner. Studio AVT firmly believes in the uttermost importance of the space within & beyond rather than the built frame.



Ankita Sweety & Pratyosh Chandan

Co-creators of Studio-an-v-thot Architects Pvt. Ltd.



Waiting Area

It all started with a few notorious smiles & laughter at our Studio. The client, known to the duo Ankita & Pratyosh since the beginning of our practice, was not willing to disclose the area of this new project while bombarding with the endless requirements (never losing the smile on his face). A "600 sq ft." space had to be converted into an Office to fit in 8 junior workstations, 2 senior workstations, a conference, a reception cum waiting area, a Principal Cabin with a library, a lounge to entertain guests, and of course a pantry with a small balcony as well as a toilet.

FACT FILE:

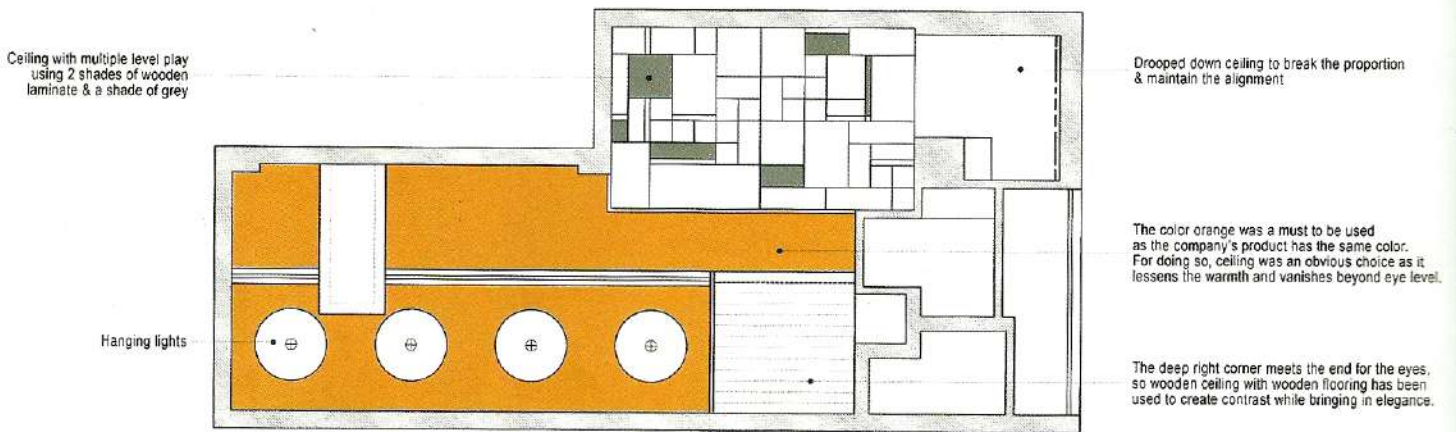
Design Team : Studio An-V-Thot Architects Pvt. Ltd.
Photo Credits : Saptorshi Majumdar
Turnkey Consultants: Mehta Enterprises
Area : 600 sq ft.
Duration : 45 days
Completion : February 2013
Cost of Project : Rs. 21,00,000/-
Location : New Delhi

He left with a couple of special requests bestowed upon the architects duo:

- Endless storage capacity
- Splash of Orange Color (to match Company's Product)

As interesting the brief was the outcome was even more fascinating. The main concern for both the architects were never to accommodate the brief but to accommodate in such a way that the openness as well as the free flow is not compromised.

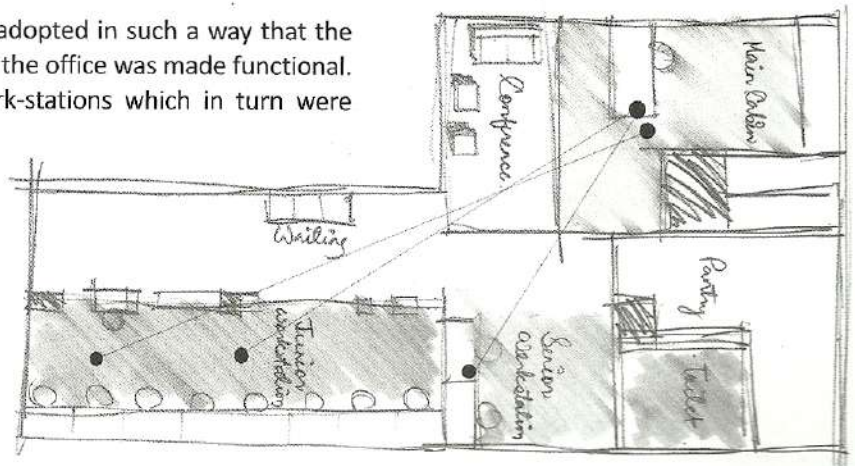
As one enters, a 100 sq ft. of open area greets the visitor with warmth as well as fresh energy in the form of a perforated cave maximizing the depth of vision. This area has a wall of wallpaper to its left with bamboos on a floating pebble bed adding life to the whole ambience. A well cushioned, wall mounted waiting seat adds panache to it.



waiting seat adds panache to it.

REFLECTED CEILING PLAN(SCALE-1:50)(NORTH-⊙)

The interactive hierarchy based planning was adopted in such a way that the everyday story became prominent even before the office was made functional. The Boss's cabin was overlooking senior work-stations which in turn were overlooking the Junior Work-stations while setting apart the movement pattern of employees, guests and owner. The lounge was adjoined to the Principal cabin providing partial blindness to the visitor's eye while the Principal is able to see through the majority of workforce area as well as the reception area. The service area including Pantry, Toilet and the Balcony was kept at the rear to avoid disturbance as well as to maintain cleanliness throughout the office.





Junior Workstation with jali supporting hanging storages at the back



Conference



LAYOUT PLAN (SCALE-1:50)(NORTH- Ⓞ)



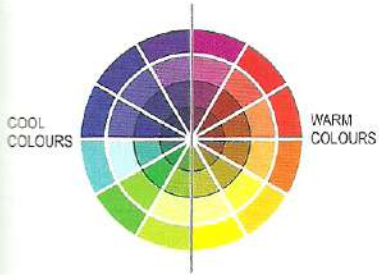
Jali supporting hanging storages

An interesting design feature that we call “the metal mesh” caters to the possibility of creating openness throughout the office. The mesh acts as a dividing line as well as a holder which holds multiple hanging storage units. The intention of using such mesh was to significantly

nurture optimum and precise privacy levels for the adjoining spaces. This also leads to intertwined and interactive play of spatial volumes. Certain light fixtures when switched on exquisitely, cast a series of interesting shadow pattern.



The lounge & the Principal cabin are placed adjacent to each other, with a three channel sliding glass partitions to separate the two. As and when required they can remain open or closed so as to act as two different units or as a single large unit. An interesting book shelf is mounted on the wall. This has been made using laser cut wooden jali and solid wood blocks. These blocks can easily be removed and re-placed in a manner to accommodate and display different sizes and faces of the books. To enhance the size of the Cabin as well as the lounge, grooves in plaster were made which run in a linear path at regular intervals. These are even more highlighted by painting the sunken surfaces with a dark color. This helps to enhance the longitudinal length of the cabin as well as the lounge.



An interesting play of color is achieved throughout the office space. This can be understood as an interactive balance between warm and cool colors, which are co-existent at every frame of vision. The color Orange was a must to be used as it symbolizes with the company's product. The architects

duo's intention was to bring in orange in a diminishing manner, and as a result, this can be seen through-out the ceiling which vanishes at the eye-level. The play of colors (green, blue, purple & grey) is introduced at several areas which in-turn brings in the desired youthfulness as well as energy to the whole ambience.

Photographs : Courtesy Studio An-V-Thot Architects Pvt. Ltd.
 Query or more details at : response.glitz@gmail.com



Book Shelf with flexible shelves



Principal Cabin